

## CILINDROS NEUMÁTICOS

Pneumatic cylinders  
Vérins pneumatiques  
Cilindri Pneumatici



### **CILINDROS NEUMÁTICOS Y ACCESORIOS ISO 15552** 330

Pneumatic cylinders and  
accessories ISO 15552  
Vérins pneumatiques et  
accessoires ISO 15552  
Cilindri Pneumatici e  
accessori ISO 15552

### **MICROCILINDROS NEUMÁTICOS Y ACCESORIOS ISO 6432** 336

Pneumatic micro-cylinders and  
accessories ISO 6432  
Micro-vérins pneumatiques et  
accessoires ISO 6432  
Microcilindri pneumatici e  
accessori ISO 6432

### **CILINDROS NEUMÁTICOS DOBLE EJE** 340

Double shaft pneumatic cylinders  
Vérins pneumatiques double axe  
Cilindri pneumatici a doppio stelo

## CILINDROS NEUMÁTICOS Y ACCESORIOS ISO 15552

Pneumatic cylinders and accessories ISO 15552

Vérins pneumatiques et accessoires ISO 15552

Cilindri Pneumatici e accessori ISO 15552

### Cilindros D.E. magnéticos ISO 15552 Ø32

Pneumatic cylinders D.A. ISO 15552 Ø32

Vérins pneumatiques D.E. magnétiques ISO 15552 Ø32

Cilindri D.E. magnetici ISO 15552 Ø32



Referencia Part n°	ROSCA TOMAS INTAKE THREAD	CARRERA (mm) STROKE (mm)	€
CNM0320025	1/8" BSP	25	202,00
CNM0320050	1/8" BSP	50	207,26
CNM0320075	1/8" BSP	75	84,00
CNM0320080	1/8" BSP	80	213,32
CNM0320100	1/8" BSP	100	88,53
CNM0320150	1/8" BSP	150	97,88
CNM0320160	1/8" BSP	160	229,49
CNM0320200	1/8" BSP	200	99,06
CNM0320250	1/8" BSP	250	108,38
CNM0320300	1/8" BSP	300	118,54
CNM0320350	1/8" BSP	350	267,90
CNM0320400	1/8" BSP	400	278,02
CNM0320450	1/8" BSP	450	288,14
CNM0320500	1/8" BSP	500	298,24

### Cilindros D.E. magnéticos ISO 15552 Ø40

Pneumatic cylinders D.A. ISO 15552 Ø40

Vérins pneumatiques D.E. magnétiques ISO 15552 Ø40

Cilindri D.E. magnetici ISO 15552 Ø 40



Referencia Part n°	ROSCA TOMAS PORT THREAD	CARRERA (mm) STROKE (mm)	€
CNM0400025	1/4" BSP	25	224,18
CNM0400050	1/4" BSP	50	231,66
CNM0400075	1/4" BSP	75	101,21
CNM0400100	1/4" BSP	100	115,66
CNM0400125	1/4" BSP	125	248,44
CNM0400150	1/4" BSP	150	136,62
CNM0400160	1/4" BSP	160	256,91
CNM0400200	1/4" BSP	200	138,25
CNM0400250	1/4" BSP	250	134,55
CNM0400300	1/4" BSP	300	147,10
CNM0400320	1/4" BSP	320	295,75
CNM0400350	1/4" BSP	350	303,02
CNM0400400	1/4" BSP	400	315,16
CNM0400450	1/4" BSP	450	327,28
CNM0400500	1/4" BSP	500	339,42

### Cilindros D.E. magnéticos ISO 15552 Ø50

Pneumatic cylinders D.A. ISO 15552 Ø50

Vérins pneumatiques D.E. magnétiques ISO 15552 Ø50

Cilindri D.E. magnetici ISO 15552 Ø50



Referencia Part n°	ROSCA TOMAS PORT THREAD	CARRERA (mm) STROKE (mm)	€
CNM0500025	1/4" BSP	25	256,99
CNM0500050	1/4" BSP	50	265,06
CNM0500075	1/4" BSP	75	133,00
CNM0500100	1/4" BSP	100	142,51
CNM0500125	1/4" BSP	125	289,34
CNM0500150	1/4" BSP	150	167,52
CNM0500160	1/4" BSP	160	300,66
CNM0500200	1/4" BSP	200	164,07
CNM0500250	1/4" BSP	250	182,89
CNM0500300	1/4" BSP	300	198,78
CNM0500320	1/4" BSP	320	352,45
CNM0500350	1/4" BSP	350	362,13
CNM0500400	1/4" BSP	400	378,30

## CILINDROS NEUMÁTICOS Y ACCESORIOS ISO 15552

Pneumatic cylinders and accessories ISO 15552

Vérins pneumatiques et accessoires ISO 15552

Cilindri Pneumatici e accessori ISO 15552

### Cilindros D.E. magnéticos ISO 15552 Ø63



Pneumatic cylinders D.A. ISO 15552 Ø63

Vérins pneumatiques D.E. magnétiques ISO 15552 Ø63

Cilindri D.E. magnetici ISO 15552 Ø63

Referencia Part n°	ROSCA TOMAS PORT THREAD	CARRERA (mm) STROKE (mm)	€
CNM0630025	3/8" BSP	25	300,06
CNM0630050	3/8" BSP	50	308,98
CNM0630075	3/8" BSP	75	164,01
CNM0630100	3/8" BSP	100	164,01
CNM0630125	3/8" BSP	125	336,48
CNM0630150	3/8" BSP	150	178,52
CNM0630160	3/8" BSP	160	348,99
CNM0630200	3/8" BSP	200	198,96
CNM0630250	3/8" BSP	250	219,39
CNM0630300	3/8" BSP	300	252,32
CNM0630320	3/8" BSP	320	407,24
CNM0630350	3/8" BSP	350	418,16
CNM0630400	3/8" BSP	400	436,35
CNM0630450	3/8" BSP	450	454,55
CNM0630500	3/8" BSP	500	472,75

### Cilindros D.E. magnéticos ISO 15552 Ø80



Pneumatic cylinders D.A. ISO 15552 Ø80

Vérins pneumatiques D.E. magnétiques ISO 15552 Ø80

Cilindri D.E. magnetici ISO 15552 Ø80

Referencia Part n°	ROSCA TOMAS PORT THREAD	CARRERA (mm) STROKE (mm)	€
CNM0800025	3/8" BSP	25	388,70
CNM0800075	3/8" BSP	75	221,72
CNM0800080	3/8" BSP	80	415,42
CNM0800100	3/8" BSP	100	230,51
CNM0800125	3/8" BSP	125	437,23
CNM0800150	3/8" BSP	150	250,40
CNM0800160	3/8" BSP	160	454,20
CNM0800200	3/8" BSP	200	279,02
CNM0800250	3/8" BSP	250	320,55
CNM0800300	3/8" BSP	300	336,38
CNM0800320	3/8" BSP	320	531,87
CNM0800350	3/8" BSP	350	546,40
CNM0800400	3/8" BSP	400	570,66
CNM0800450	3/8" BSP	450	594,93
CNM0800500	3/8" BSP	500	619,21

### Cilindros D.E. magnéticos ISO 15552 Ø100



Pneumatic cylinders D.A. ISO 15552 Ø100

Vérins pneumatiques D.E. magnétiques ISO 15552 Ø100

Cilindri D.E. magnetici ISO 15552 Ø100

Referencia Part n°	ROSCA TOMAS PORT THREAD	CARRERA (mm) STROKE (mm)	€
CNM1000050	1/2" BSP	50	507,92

## CILINDROS NEUMÁTICOS Y ACCESORIOS ISO 15552

Pneumatic cylinders and accessories ISO 15552

Vérins pneumatiques et accessoires ISO 15552

Cilindri Pneumatici e accessori ISO 15552

### Cilindros D.E. magnéticos ISO 15552 Ø125



Pneumatic cylinders D.A. ISO 15552 Ø125

Vérins pneumatiques D.E. magnétiques ISO 15552 Ø125

Cilindri D.E. magnetici ISO 15552 Ø125

Referencia Part n°	ROSCA TOMAS PORT THREAD	CARRERA (mm) STROKE (mm)	€
CNM1250025	1/2" BSP	25	712,11
CNM1250050	1/2" BSP	50	730,18
CNM1250075	1/2" BSP	75	750,75
CNM1250080	1/2" BSP	80	754,86
CNM1250100	1/2" BSP	100	771,43
CNM1250125	1/2" BSP	125	792,05
CNM1250150	1/2" BSP	150	812,61
CNM1250160	1/2" BSP	160	820,76
CNM1250200	1/2" BSP	200	853,94
CNM1250250	1/2" BSP	250	895,17
CNM1250300	1/2" BSP	300	936,22
CNM1250320	1/2" BSP	320	952,60
CNM1250350	1/2" BSP	350	977,67
CNM1250450	1/2" BSP	450	1.060,20

### Cilindros D.E. magnéticos ISO 15552 Ø160



Pneumatic cylinders D.A. ISO 15552 Ø160

Vérins pneumatiques D.E. magnétiques ISO 15552 Ø160

Cilindri D.E. magnetici ISO 15552 Ø160

Referencia Part n°	ROSCA TOMAS PORT THREAD	CARRERA (mm) STROKE (mm)	€
CNM1600025	3/4" BSP	25	1.570,94
CNM1600080	3/4" BSP	80	1.617,60
CNM1600100	3/4" BSP	100	1.633,15
CNM1600125	3/4" BSP	125	1.654,94
CNM1600160	3/4" BSP	180	1.682,93

### Cilindros D.E. magnéticos ISO 15552 Ø200



Pneumatic cylinders D.A. ISO 15552 Ø200

Vérins pneumatiques D.E. magnétiques ISO 15552 Ø200

Cilindri D.E. magnetici ISO 15552 Ø200

Referencia Part n°	ROSCA TOMAS PORT THREAD	CARRERA (mm) STROKE (mm)	€
CNM2000025	3/4" BSP	25	2.087,33
CNM2000050	3/4" BSP	50	2.115,32
CNM2000080	3/4" BSP	80	2.146,43
CNM2000100	3/4" BSP	100	2.165,10
CNM2000125	3/4" BSP	125	2.189,97
CNM2000160	3/4" BSP	160	2.227,31

## CILINDROS NEUMÁTICOS Y ACCESORIOS ISO 15552

Pneumatic cylinders and accessories ISO 15552

Vérins pneumatiques et accessoires ISO 15552

Cilindri Pneumatici e accessori ISO 15552



### Charnela hembra para cilindro ISO 15552

Female pivot in steel ISO 15552

Articulation femelle pour vérin ISO 15552

Cerniera femmina cilindro ISO 15552

Referencia Part n°	CILINDRO CYLINDER	€
CHCN032	32mm	9,78
CHCN040	40mm	9,53
CHCN050	50mm	15,32
CHCN063	63mm	17,53
CHCN080	80mm	24,67



### Charnela macho para cilindro ISO 15552

Male pivot in steel ISO 15552

Articulation mâle pour vérins ISO 15552

Cerniera maschio cilindro ISO 15552

Referencia Part n°	CILINDRO CYLINDER	€
CMCN032	32mm	8,70
CMCN040	40mm	10,47
CMCN050	50mm	12,96
CMCN063	63mm	16,18
CMCN080	80mm	21,84
CMCN100	100mm	89,38
CMCN125	125mm	158,75



### Contra charnela para cilindro ISO 15552

Right angles joint in steel ISO 15552

Contre-chape pour vérins ISO 15552

Contro cerniera cilindro ISO 15552

Referencia Part n°	CILINDRO CYLINDER	€
CCCN032	32mm	11,80
CCCN040	40mm	14,91
CCCN050	50mm	20,48
CCCN063	63mm	26,06
CCCN080	80mm	38,43



### Brida para cilindro ISO 15552

Front or rear flange in zinc-plated steel ISO 15552

Flasque pour vérins ISO 15552

Flangia per cilindro ISO 15552

Referencia Part n°	CILINDRO CYLINDER	€
BCN032	32mm	14,38
BCN040	40mm	15,61
BCN050	50mm	22,70
BCN063	63mm	26,96
BCN080	80mm	42,53

## CILINDROS NEUMÁTICOS Y ACCESORIOS ISO 15552

Pneumatic cylinders and accessories ISO 15552

Vérins pneumatiques et accessoires ISO 15552

Cilindri Pneumatici e accessori ISO 15552

### Pata para cilindro ISO 15552



Foot mounting in zinc-plated steel ISO 15552

Pied pour vérins ISO 15552

Piedino basso per cilindro ISO 15552

Referencia Part n°	CILINDRO CYLINDER	€
PCN032	32mm	5,74
PCN040	40mm	8,52
PCN050	50mm	11,31
PCN063	63mm	16,39
PCN080	80mm	19,01
PCN100	100mm	46,04
PCN125	125mm	216,66

### Horquilla para cilindro ISO 15552



Female rod clevis ISO 15552

Chape de tige pour vérins ISO 15552

Forcella femmina per cilindro ISO 15552

Referencia Part n°	CILINDRO CYLINDER	€
HCN032	32mm	7,70
HCN040	40mm	10,34
HCN050	50mm	17,11
HCN063	63mm	17,81
HCN080	80mm	28,51
HCN125	125mm	186,55

### Rótula para cilindro ISO 15552



Oscillating eye ISO 15552

Rotule pour vérin ISO 15552

Snodo sferico per cilindro ISO 15552

Referencia Part n°	CILINDRO CYLINDER	€
RCN032	32mm	7,90
RCN040	40mm	9,12
RCN050	50mm	14,45
RCN063	63mm	17,50
RCN080	80mm	23,69

### Sensores para cilindro ISO 15552



Sensors for ISO 15552 pivot

Capteurs pour vérin ISO 15552

Sensori per cilindro ISO 15552

Referencia Part n°	DESCRIPCIÓN DESCRIPTION	VOLTAJE (V) VOLTAGE (V)	€
SENSORHX31R	Tipo Reed Switch, 2 cables / Reed Switch type, 2 cables	5-240V (DC/AC)	17,24
SENSORHX31N	Tipo NPN, 3 cables / NPN type, 3 cables	5-30V (DC)	49,38

## MICROCILINDROS NEUMÁTICOS Y ACCESORIOS ISO 6432

Pneumatic micro-cylinders and accessories ISO 6432

Micro-vérins pneumatiques et accessoires ISO 6432

Microcilindri pneumatici e accessori ISO 6432

### Microcilindros D.E. magnéticos ISO 6432 Ø12

Micro-cylinders D.A. ISO 6432 Ø12

Micro-vérins D.E. magnétiques ISO 6432 Ø12

Microcilindri D.E magnetici ISO 6432 Ø12



Referencia Part n°	CARRERA (mm) STROKE (mm)	TOMAS A-B PORTS A-B	€
MCDM12025	25	M5	43,74
MCDM12050	50	M5	44,01
MCDM12075	75	M5	59,28
MCDM12100	100	M5	54,01
MCDM12125	125	M5	105,59
MCDM12150	150	M5	59,09
MCDM12200	200	M5	67,59
MCDM12250	250	M5	75,22
MCDM12300	300	M5	80,26
MCDM12350	350	M5	94,36
MCDM12400	400	M5	102,32

### Microcilindros D.E.magnéticos ISO 6432 Ø16

Micro-cylinders D.A. ISO 6432 Ø16

Micro-vérins D.E. magnétiques ISO 6432 Ø16

Microcilindri D.E magnetici ISO 6432 Ø16



Referencia Part n°	CARRERA (mm) STROKE (mm)	TOMAS A-B PORTS A-B	€
MCDM16010	10	M5	96,09
MCDM16025	25	M5	40,55
MCDM16050	50	M5	43,07
MCDM16075	75	M5	45,23
MCDM16100	100	M5	46,43
MCDM16150	150	M5	51,64
MCDM16200	200	M5	56,10
MCDM16250	250	M5	65,25
MCDM16300	300	M5	71,10
MCDM16350	350	M5	94,36
MCDM16400	400	M5	102,32

### Microcilindros D.E.magnéticos ISO 6432 Ø20

Micro-cylinders D.A. ISO 6432 Ø20

Micro-vérins D.E. magnétiques ISO 6432 Ø20

Microcilindri D.E magnetici ISO 6432 Ø20



Referencia Part n°	CARRERA (mm) STROKE (mm)	TOMAS A-B PORTS A-B	€
MCDM20010	10	1/8" BSP	99,85
MCDM20025	25	1/8" BSP	40,48
MCDM20050	50	1/8" BSP	44,40
MCDM20075	75	1/8" BSP	45,70
MCDM20100	100	1/8" BSP	48,97
MCDM20125	125	1/8" BSP	118,17
MCDM20150	150	1/8" BSP	59,32
MCDM20200	200	1/8" BSP	67,06
MCDM20250	250	1/8" BSP	73,61
MCDM20300	300	1/8" BSP	81,81
MCDM20350	350	1/8" BSP	99,12
MCDM20400	400	1/8" BSP	108,34

## MICROCILINDROS NEUMÁTICOS Y ACCESORIOS ISO 6432

Pneumatic micro-cylinders and accessories ISO 6432

Micro-vérins pneumatiques et accessoires ISO 6432

Microcilindri pneumatici e accessori ISO 6432

### Microcilindros D.E. magnéticos ISO 6432 Ø25

Micro-cylinders D.A. ISO 6432 Ø25

Micro-vérins D.E. magnétiques ISO 6432 Ø25

Microcilindri D.E magnetici ISO 6432 Ø25



Referencia Part n°	CARRERA (mm) STROKE (mm)	TOMAS A-B PORTS A-B	€
MCDM25010	10	1/8" BSP	*
MCDM25025	25	1/8" BSP	45,70
MCDM25050	50	1/8" BSP	47,66
MCDM25075	75	1/8" BSP	47,71
MCDM25100	100	1/8" BSP	55,08
MCDM25125	125	1/8" BSP	136,69
MCDM25150	150	1/8" BSP	61,37
MCDM25200	200	1/8" BSP	69,86
MCDM25250	250	1/8" BSP	77,04
MCDM25300	300	1/8" BSP	84,22
MCDM25350	350	1/8" BSP	104,50
MCDM25400	400	1/8" BSP	114,64

FLUIDAL



## MICROCILINDROS NEUMÁTICOS Y ACCESORIOS ISO 6432

Pneumatic micro-cylinders and accessories ISO 6432

Micro-vérins pneumatiques et accessoires ISO 6432

Microcilindri pneumatici e accessori ISO 6432

### Microcilindros S.E. magnéticos ISO 6432 Ø12

Micro-cylinders S.A. ISO 6432 Ø12

Micro-vérins S.E. magnétiques ISO 6432 Ø12

Microcilindri S.E magnetici ISO 6432 Ø12



Referencia Part n°	CARRERA (mm) STROKE (mm)	TOMAS A-B PORTS A-B	€
MCSM12010	10	M5	90,91
MCSM12025	25	M5	54,13
MCSM12050	50	M5	60,52

### Microcilindros S.E. magnéticos ISO 6432 Ø16

Micro-cylinders S.A. ISO 6432 Ø16

Micro-vérins S.E. magnétiques ISO 6432 Ø16

Microcilindri S.E magnetici ISO 6432 Ø16



Referencia Part n°	CARRERA (mm) STROKE (mm)	TOMAS A-B PORTS A-B	€
MCSM16010	10	M5	95,67
MCSM16025	25	M5	55,75
MCSM16050	50	M5	58,26
MCSM16075	75	M5	58,79
MCSM16100	100	M5	60,36
MCSM16150	150	M5	67,13

### Microcilindros S.E. magnéticos ISO 6432 Ø20

Micro-cylinders S.A. ISO 6432 Ø20

Micro-vérins S.E. magnétiques ISO 6432 Ø20

Microcilindri S.E magnetici ISO 6432 Ø20



Referencia Part n°	CARRERA (mm) STROKE (mm)	TOMAS A-B PORTS A-B	€
MCSM20010	10	1/8" BSP	99,28
MCSM20025	25	1/8" BSP	52,62
MCSM20050	50	1/8" BSP	57,72
MCSM20075	75	1/8" BSP	59,41
MCSM20100	100	1/8" BSP	63,66
MCSM20150	150	1/8" BSP	75,67

### Microcilindros S.E. magnéticos ISO 6432 Ø25

Micro-cylinders S.A. ISO 6432 Ø25

Micro-vérins S.E. magnétiques ISO 6432 Ø25

Microcilindri S.E magnetici ISO 6432 Ø25



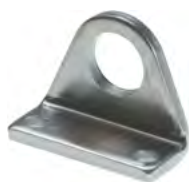
Referencia Part n°	CARRERA (mm) STROKE (mm)	TOMAS A-B PORTS A-B	€
MCSM25010	10	1/8" BSP	111,44
MCSM25025	25	1/8" BSP	59,41
MCSM25050	50	1/8" BSP	65,53
MCSM25075	75	1/8" BSP	61,96
MCSM25100	100	1/8" BSP	64,50
MCSM25150	150	1/8" BSP	79,78

## MICROCILINDROS NEUMÁTICOS Y ACCESORIOS ISO 6432

Pneumatic micro-cylinders and accessories ISO 6432

Micro-vérins pneumatiques et accessoires ISO 6432

Microcilindri pneumatici e accessori ISO 6432



### Patatas para microcilindro

Foot mounting for micro-cylinders

Articulation pour micro-vérins

Piedino per microcilindro

Referencia Part n°	CILINDRO CYLINDER	€
PMCN12	12mm	5,74
PMCN16	16mm	5,74
PMCN20	20mm	6,31
PMCN25	25mm	6,25



### Charnelas para microcilindro

Rear pivot mounting for micro-cylinders

Articulation pour micro-vérins

Cerniera per microcilindro

Referencia Part n°	CILINDRO CYLINDER	€
CMCN12	12mm	11,64
CMCN16	16mm	11,64
CMCN20	20mm	11,64
CMCN25	25mm	11,64



### Horquillas para microcilindro

Rod clevis for micro-cylinders

Chape de tige pour micro-vérins

Forcella femmina per microcilindro

Referencia Part n°	CILINDRO CYLINDER	€
HMCN12	12mm	5,11
HMCN16	16mm	5,16
HMCN20	20mm	6,53
HMCN25	25mm	8,45



### Rótulas para microcilindro

Oscillating clevis for micro-cylinders

Rotules pour micro-vérins

Snodo sferico per microcilindro

Referencia Part n°	CILINDRO CYLINDER	€
RMCN12	12mm	5,96
RMCN16	16mm	5,96
RMCN20	20mm	6,70
RMCN25	25mm	8,98



### Bridas para microcilindro

Flange mounting for micro-cylinders

Flasque pour micro-vérins

Flangia per microcilindro

Referencia Part n°	CILINDRO CYLINDER	€
BMCN12	12mm	5,57
BMCN16	16mm	5,57
BMCN20	20mm	7,27
BMCN25	25mm	10,98

## CILINDROS NEUMÁTICOS DOBLE EJE

Double shaft pneumatic cylinders

Vérins pneumatiques double axe

Cilindri pneumatici a doppio stelo



### Cilindros neumáticos doble efecto, doble eje Ø10

Double shaft, D.A. pneumatic cylinders Ø10

Vérins pneumatiques D.E. double arbre Ø10

Cilindri pneumatici doppio effetto, a doppio stelo Ø10

Referencia Part n°	CARRERA (mm) STROKE (mm)	TOMAS A-B PORTS A-B	€
CNDEM1010	10	M5	109,28
CNDEM1020	20	M5	113,69
CNDEM1025	25	M5	116,35
CNDEM1030	30	M5	118,53
CNDEM1040	40	M5	123,78
CNDEM1050	50	M5	127,77
CNDEM1060	60	M5	136,53
CNDEM1070	70	M5	144,86
CNDEM1075	75	M5	149,70
CNDEM1080	80	M5	154,11
CNDEM1090	90	M5	162,87
CNDEM10100	100	M5	171,20



### Cilindros neumáticos doble efecto, doble eje Ø16

Double shaft, D.A. pneumatic cylinders Ø16

Vérins pneumatiques D.E. double arbre Ø16

Cilindri pneumatici doppio effetto, a doppio stelo Ø16

Referencia Part n°	CARRERA (mm) STROKE (mm)	TOMAS A-B PORTS A-B	€
CNDEM1610	10	M5	115,44
CNDEM1620	20	M5	120,28
CNDEM1625	25	M5	122,94
CNDEM1630	30	M5	125,11
CNDEM1640	40	M5	130,78
CNDEM1650	50	M5	135,20
CNDEM1660	60	M5	144,86
CNDEM1670	70	M5	153,62
CNDEM1675	75	M5	158,45
CNDEM1680	80	M5	163,29
CNDEM1690	90	M5	172,53
CNDEM16100	100	M5	181,71
CNDEM16125	125	M5	204,13
CNDEM16150	150	M5	225,21



### Cilindros neumáticos doble efecto, doble eje Ø20

Double shaft, D.A. pneumatic cylinders Ø20

Vérins pneumatiques D.E. double arbre Ø20

Cilindri pneumatici doppio effetto, a doppio stelo Ø20

Referencia Part n°	CARRERA (mm) STROKE (mm)	TOMAS A-B PORTS A-B	€
CNDEM2010	10	M5	128,19
CNDEM2020	20	M5	137,86
CNDEM2025	25	M5	142,69
CNDEM2030	30	M5	147,04
CNDEM2040	40	M5	156,28
CNDEM2050	50	M5	165,53
CNDEM2060	60	M5	172,53
CNDEM2070	70	M5	178,70
CNDEM2075	75	M5	183,04
CNDEM2080	80	M5	187,04
CNDEM2090	90	M5	193,62
CNDEM20100	100	M5	201,04
CNDEM20125	125	M5	222,55
CNDEM20150	150	M5	242,31

## CILINDROS NEUMÁTICOS DOBLE EJE

Double shaft pneumatic cylinders

Vérins pneumatiques double axe

Cilindri pneumatici a doppio stelo



### Cilindros neumáticos doble efecto, doble eje Ø25

Double shaft, D.A. pneumatic cylinders Ø25

Vérins pneumatiques D.E. double arbre Ø25

Cilindri pneumatici doppio effetto, a doppio stelo Ø25

Referencia Part n°	CARRERA (mm) STROKE (mm)	TOMAS A-B PORTS A-B	€
CNDEM2510	10	1/8" BSP	139,61
CNDEM2520	20	1/8" BSP	147,95
CNDEM2525	25	1/8" BSP	151,87
CNDEM2530	30	1/8" BSP	156,28
CNDEM2540	40	1/8" BSP	165,53
CNDEM2550	50	1/8" BSP	173,87
CNDEM2560	60	1/8" BSP	183,04
CNDEM2570	70	1/8" BSP	192,71
CNDEM2575	75	1/8" BSP	197,54
CNDEM2580	80	1/8" BSP	201,47
CNDEM2590	90	1/8" BSP	211,13
CNDEM25100	100	1/8" BSP	220,38
CNDEM25125	125	1/8" BSP	249,31
CNDEM25150	150	1/8" BSP	279,22



### Cilindros neumáticos doble efecto, doble eje Ø32

Double shaft, D.A. pneumatic cylinders Ø32

Vérins pneumatiques D.E. double arbre Ø32

Cilindri pneumatici doppio effetto, a doppio stelo Ø32

Referencia Part n°	CARRERA (mm) STROKE (mm)	TOMAS A-B PORTS A-B	€
CNDEM3210	10	1/8" BSP	174,29
CNDEM3220	20	1/8" BSP	187,87
CNDEM3225	25	1/8" BSP	194,88
CNDEM3230	30	1/8" BSP	201,47
CNDEM3240	40	1/8" BSP	215,54
CNDEM3250	50	1/8" BSP	229,56
CNDEM3260	60	1/8" BSP	242,31
CNDEM3270	70	1/8" BSP	251,55
CNDEM3275	75	1/8" BSP	256,38
CNDEM3280	80	1/8" BSP	261,64
CNDEM3290	90	1/8" BSP	272,15
CNDEM32100	100	1/8" BSP	280,06
CNDEM32125	125	1/8" BSP	306,40
CNDEM32150	150	1/8" BSP	330,15

# Cajas de juntas y arandelas

## O´rings and seals boxes



Part nº Referencia	DESCRIPTION DESCRIPCIÓN	€
CAJA G	CAJA DE JUNTAS G NBR 70 PULGADAS	*
CAJA H	CAJA DE JUNTAS H NBR 70 METRIC	*

**JUNTAS**  
**BESMA**

**SALINAS**  
CAUCHOS Y POLIURETANOS